

Social Determinants of Health

Everyone deserves the chance to live a healthy life—and the opportunity to do so begins long before the need for medical care arises. Health starts where we live, work, and play. Now, as health care organizations recognize the impact social determinants have on health outcomes, care is beginning there, too.

What Are Social Determinants of Health?

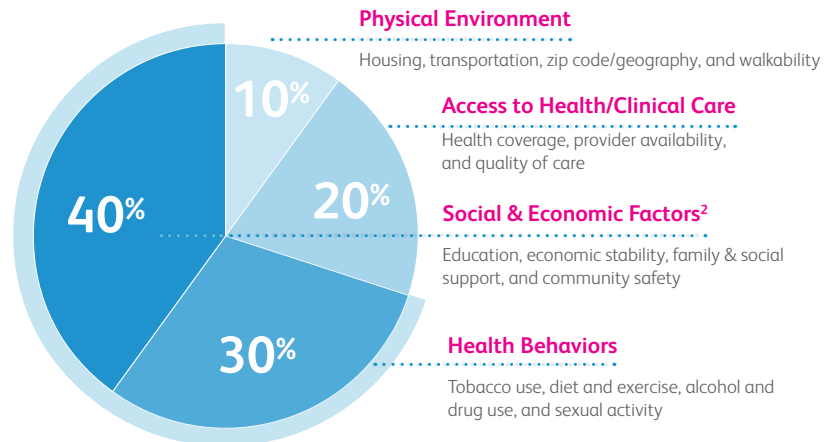
Social determinants of health are conditions within our environment that affect a wide range of health, functioning, and quality-of-life outcomes.¹

These conditions include:

- Physical environment
- Access to health/clinical care
- Social & economic factors²
- Health behaviors

These conditions can be further grouped into 5 domains:

- Economic stability
- Health behaviors
- Community/Social context
- Education
- Health care



Social determinants are often interrelated, and most people are dealing with more than one at a time. Improving health outcomes means taking a holistic view in your approach.

The US economy loses ~\$300 billion annually due to the direct and indirect costs of health disparities.³

Using Social Determinants to Improve Health Outcomes

Value-based contracts have increased the focus on social determinants, and 91% of organizations have at least one value-based program.⁴ Social determinants are also an important component of key quality initiatives and programs, including Healthy People 2020 and NCQA's PCMH 2017 recognition program.

By incorporating an immunization focus into social determinants programs, we can help engage this hard-to-reach population in nontraditional ways that help ensure they receive recommended immunizations.

SocialScape™ Explorer, a tool available from Pfizer Vaccines, is designed to help identify opportunities to improve immunization rates as part of a social determinants program.

NCQA=National Committee for Quality Assurance; PCMH=patient-centered medical home.

References: 1. American Hospital Association, Task Force on Ensuring Access in Vulnerable Communities. Emerging strategies to ensure access to health care services. <https://www.aha.org/system/files/2018-02/social-determinants-health.pdf>. Published September 21, 2017. Accessed September 10, 2018. 2. Robert Wood Johnson Foundation and University of Wisconsin Population Health Institute. 2017 County health rankings key findings report. March 2017. <http://www.countyhealthrankings.org/explore-health-rankings/rankings-reports/2017-county-health-rankings-key-findings-report>. Accessed September 10, 2018. 3. The Henry J. Kaiser Family Foundation. Focus on health care disparities. <https://www.kff.org/disparities-policy/issue-brief/disparities-in-health-and-health-care-five-key-questions-and-answers/>. December 2012. Accessed September 10, 2018. 4. Beaton T. How preventive healthcare services reduce spending for payers. HealthPayer Intelligence website. <https://healthpayerintelligence.com/news/how-preventive-healthcare-services-reduce-spending-for-payers>. Published August 29, 2017. Accessed September 20, 2018.

Using Social Determinants to Help Improve Immunization Rates

SocialScope™ Explorer

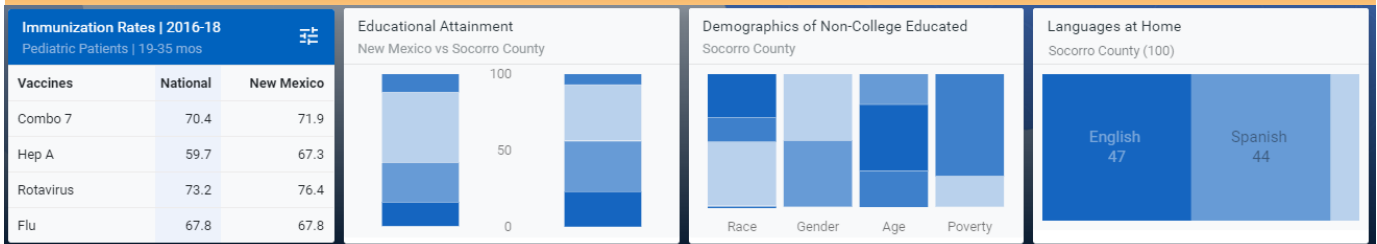
Pfizer Vaccines has made available a social determinants analytics platform called SocialScope™ Explorer.

SocialScope™ Explorer provides a national view of the relationship between social determinants and immunization gaps. It is a cloud-based analytics platform that fuses relevant data about people and communities to generate insights into socially at-risk populations. Interactive charts and maps let users view demographic information and analysis, including:

- Vaccination rates for adults, adolescents, and children at the state level
- County, state, and national demographic data predicting social determinants of health risks likely impacting vaccination adherence rates



Demographic Data



Contact your Pfizer Vaccines Account Manager to learn more about the SocialScope™ Explorer

